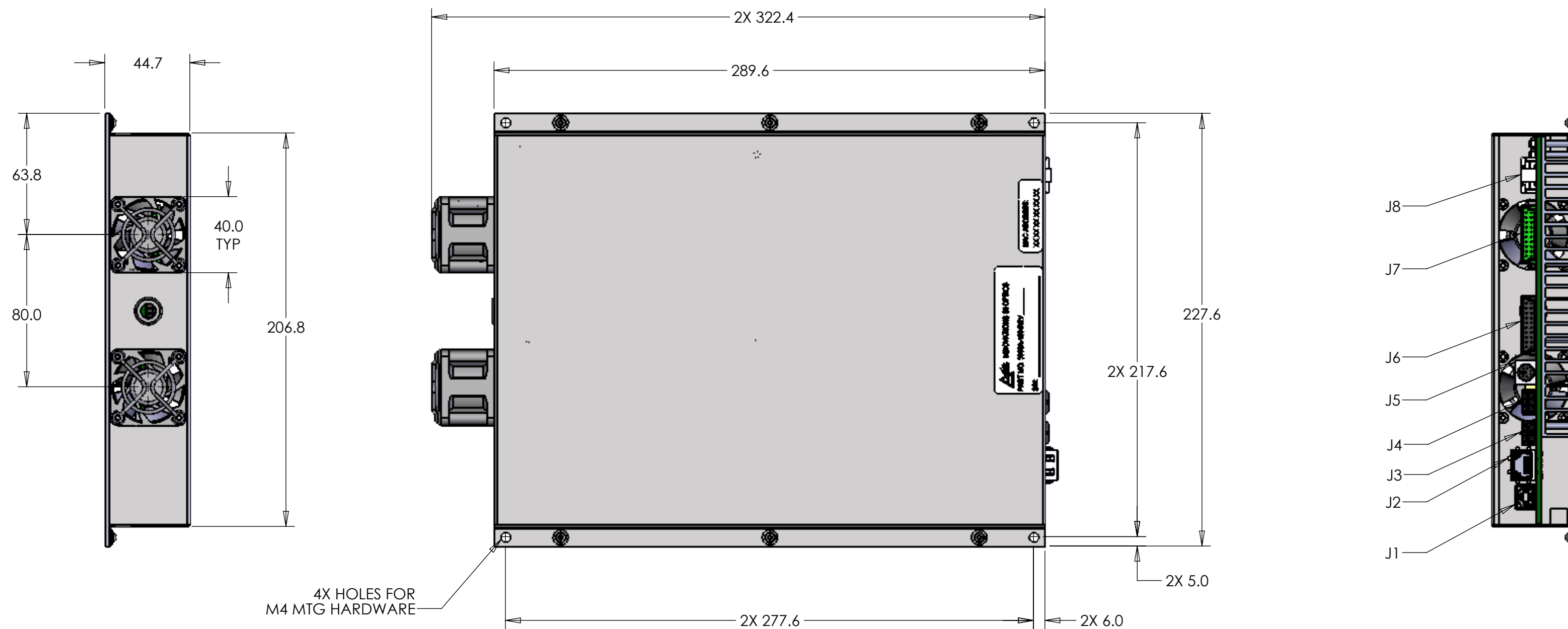
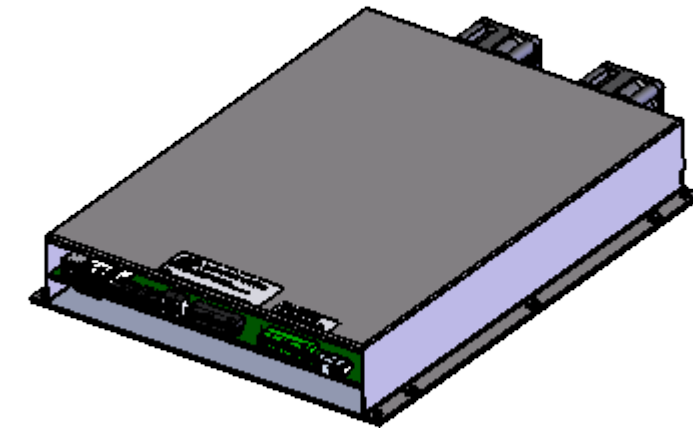


REVISIONS				
REV	ECO NO	DESCRIPTION	DATE	ENG
4	E-00108	REDESIGNED & REDRAWN	8/3/17	SFS

CONNECTOR DEFINITION		
CONNECTOR	TYPE	FUNCTION
J1	USB RECEPTACLE B	USB
J2	RJ45	ETHERNET 10/100 MBPS
J3	6 PIN MOLEX SHERLOCK™	GPIO / ISOLATED TRIGGER
J4	3 PIN MOLEX SHERLOCK™	RS-232 (TIA-232-F)
J5	6 PIN MINI-DIN	PHOTOSENSOR
J6	2 ROW, 20 PIN, BLK	OUTPUT CONNECTOR
J7	2 ROW, 20 PIN, GRN	OUTPUT CONNECTOR
J8	ELCON™ MINI POWER CONNECTOR	+24VDC INPUT



NOTES:
1. CONTENT FOR REFERENCE ONLY AND SUBJECT TO CHANGE

INSTALLATION CONTROL DRAWING

UNLESS OTHERWISE SPECIFIED: DIMENSIONS ARE IN MILLIMETERS TOLERANCES: 1 PLACE DECIMAL: ± 0.1 2 PLACE DECIMALS: ± 0.05 3 PLACE DECIMALS: ± 0.025 ANGLE: ± 0.5	DRW	SFS	DATE	12/6/2016
	ENG	SFS	DATE	12/6/2016
	ENG APVD	TB	DATE	12/6/2016
	MATERIAL:	FINISH:		



THIS DRAWING AND SPECIFICATIONS
HEREIN ARE THE PROPERTY OF
INNOVATIONS IN OPTICS, INC. AND
SHALL NOT BE REPRODUCED NOR
COPIED NOR USED IN WHOLE OR IN
PART AS THE BASIS FOR THE
MANUFACTURE OR SALE OF ITEMS
WITHOUT THE EXPRESS WRITTEN
PERMISSION OF INNOVATIONS IN
OPTICS, INC.

Innovations in Optics, Inc. 82 Cummings Park Woburn, MA 01801 TEL: (781) 933-4477 FAX: (781) 933-0007		
TITLE	DRIVER ASSY	
SIZE C	DWG. NO. 5500A-100-ICD	REV 4
SCALE: 1:5	SHEET 1 of 1	